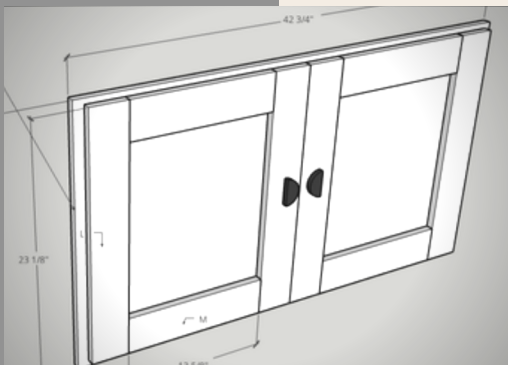
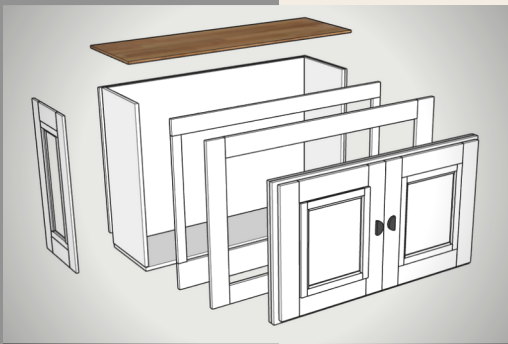
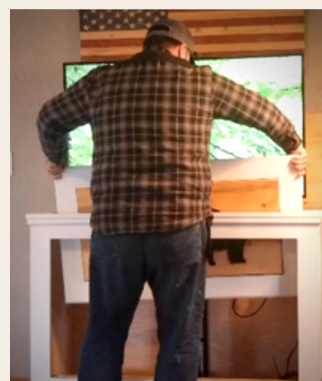


TVLIFTCABINET.COM



DIY TV LIFT CABINET PROJECT PLAN + MATERIAL LIST + CUT SHEET + OPTIONAL REVERSIBLE PANEL



DIY TV LIFT CABINET PROJECT PLAN

This project plan describes step-by-step how to build a custom TV Lift Cabinet with an integrated lift mechanism to lift the TV from the cabinet.



Overview

Before building this project be sure to watch our companion video for this build along with several other "YouTube Maker" TV Lift Build videos at

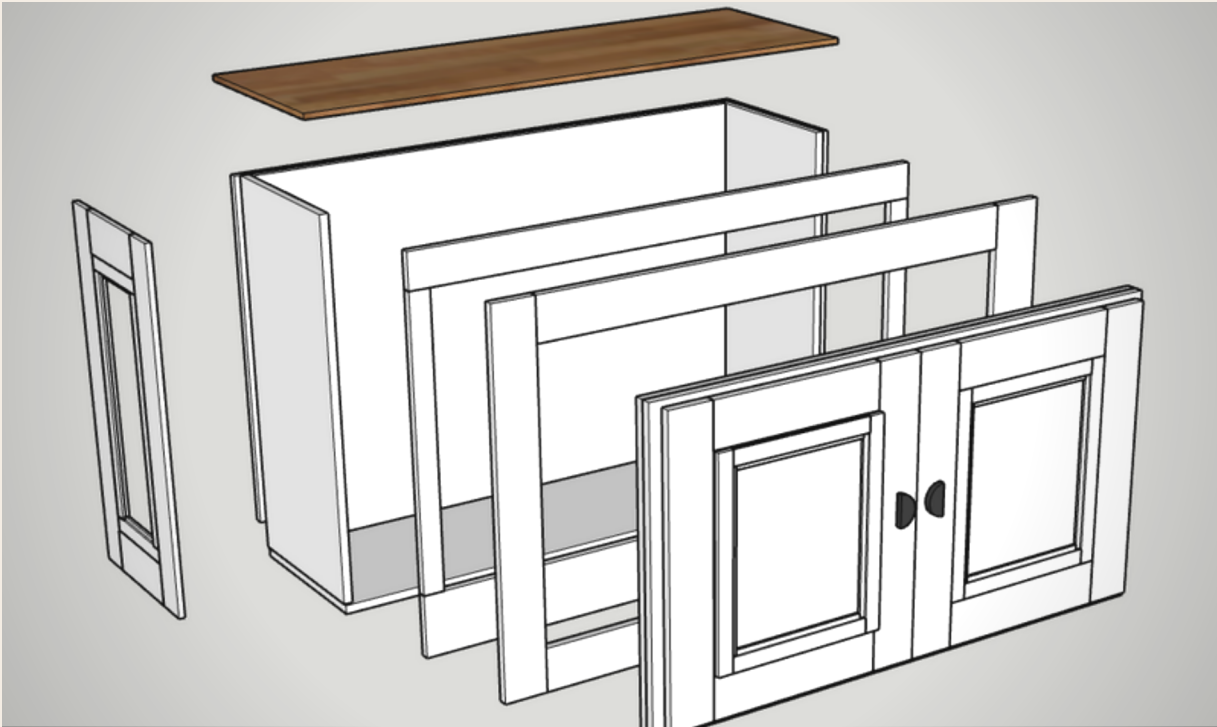
www.TVLiftCabinet.com/DIY.

Be sure to measure your TV and purchase the correct size lift mechanism (available at TVLiftCabinet.com)

In terms of woodworking projects this is a fairly simply project without drawers or shelves. You could customize it to fit your design preference, for example you could use nicer hard woods and stain it, you could dress it up with reclaimed wood instead of MDF. There are countless ways you could build on this design foundation to make a custom design of your own.

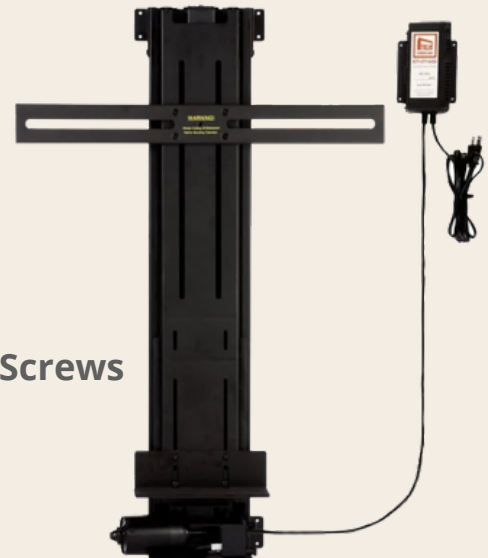
For a free build video of this project:
Visit www.TVLiftCabinet.com/DIY

Materials List



TVliftcabinet.com Materials List

- ★ 32.5" TV Lift Mechanism (available at TVLiftCabinet.com)
- ★ Poplar 1"x6"x96" - 2 each
- ★ 1/4" Plywood 4x8 - 1 Sheet
- ★ 3/4" Plywood 4x8 - 2 Sheets
- ★ 1/2" MDF 4x8 - 1 Sheet
- ★ 3/4" Larger than 17" x 50 3/4" (lid board)
- ★ 3/8" Stop Molding 8' lengths - 6 each
- ★ 1 5/8" Construction Screws, 1 1/2" Pocket Screws
- ★ 1" & 1 5/8" Brad Nails
- ★ Wood Glue, Paintable Wood Filler
- ★ Piano Hinge
- ★ White Primer/Paint and Wood Stain



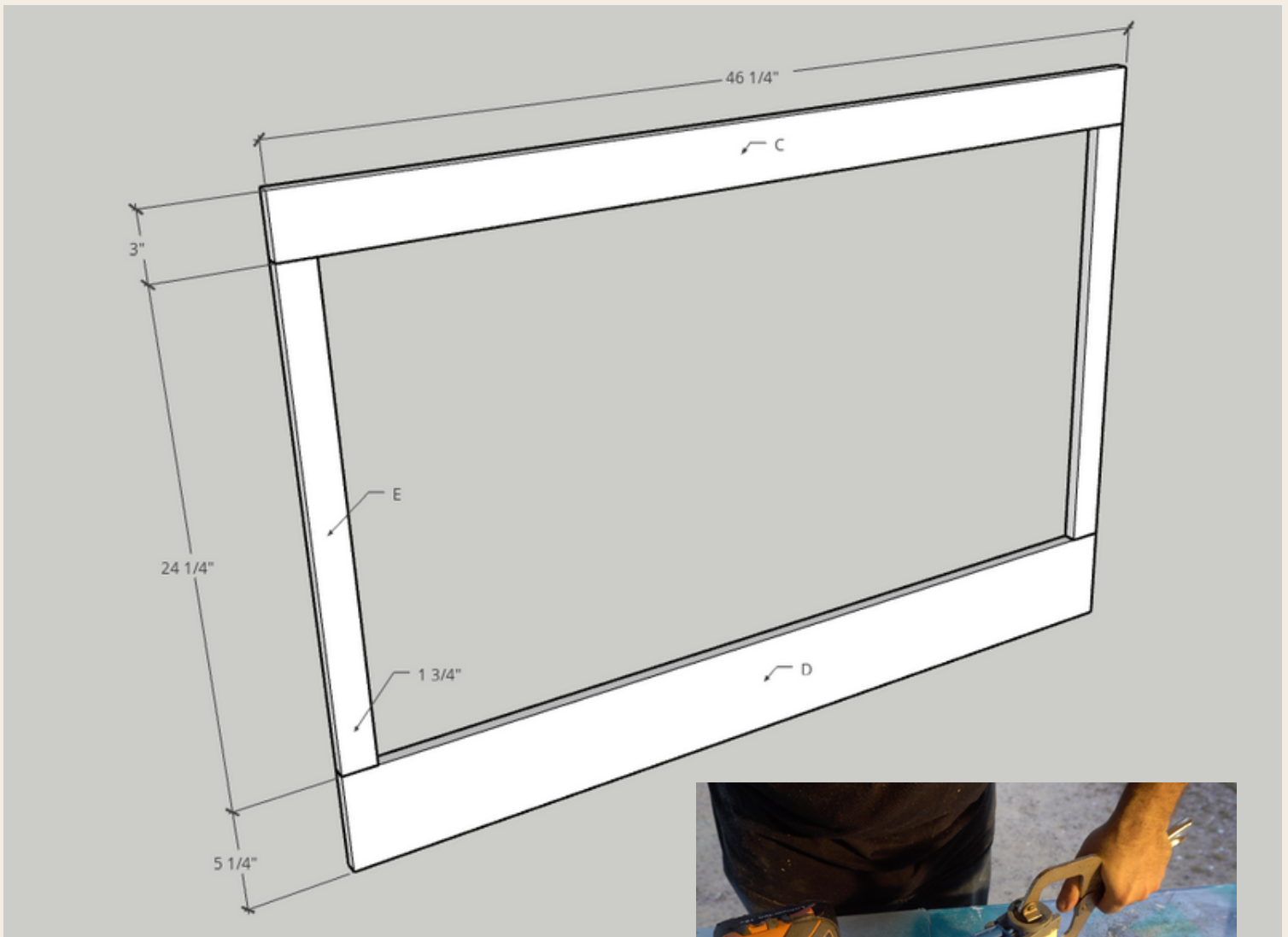
CUT LIST

Diagram ID	Description	Material	Qty	Width	Length	Thickness
A	Bottom	3/4" Plywood	1	14 1/2"	47 3/4"	3/4"
B	Back	3/4" Plywood	1	46 1/4"	32 1/2"	3/4"
C	Face Frame Upper Rail	Poplar	1	3"	46 1/4"	3/4"
D	Face Frame Lower Rail	Poplar	1	5 1/4"	46 1/4"	3/4"
E	Face Frame Style	Poplar	2	1 3/4"	24 1/4"	3/4"
F	Side Panel	3/4" Plywood	2	14 1/2"	32 1/2"	3/4"
G	Side Rail	1/2" MDF	4	3 1/2"	8 1/2"	1/2"
H	Front and Back Rail	1/2" MDF	4	3 1/2"	41 1/4"	1/2"
I	Front and Back Styke	1/2" MDF	4	3 1/2"	30 1/8"	1/2"
J	Panel Holder	Poplar	1	1 3/4"	46"	3/4"
K	Front Panel	3/4" Plywood	1	24 1/4"	42 3/4"	3/4"
L	Door Style	1/2" MDF	4	3 1/2"	23 1/8"	1/2"
M	Door Rail	1/2" MDF	4	3 1/2"	13 5/8"	1/2"
N	Base Trim Front and Back	1/4" Plywood	2	3 1/8"	47 3/4"	1/4"
O	Base Trim Sides	1/4" Plywood	2	3 1/8"	15"	1/4"
P	Top	3/4" Pine	1	16 1/2"	49 1/4"	3/4"
Q	Side Styles	1/2" MDF	4	3"	30 1/8"	1/2"
R	Top Trim Molding Long Way	Poplar	2	1 3/4"	46 1/4"	3/4"
S	Top Trim Molding Short Way	Poplar	2	1 3/4"	16 1/2"	3/4"
T	Top Lid	Pine	1	17"	50 3/4"	3/4"



CUT LIST NOTES

The cut list does not include the dimensions for the 3/8" stop molding used alongside all styles and rails (pictured below). We suggest you measure each for a nice fit. You could optionally use 3/8" quarter round.

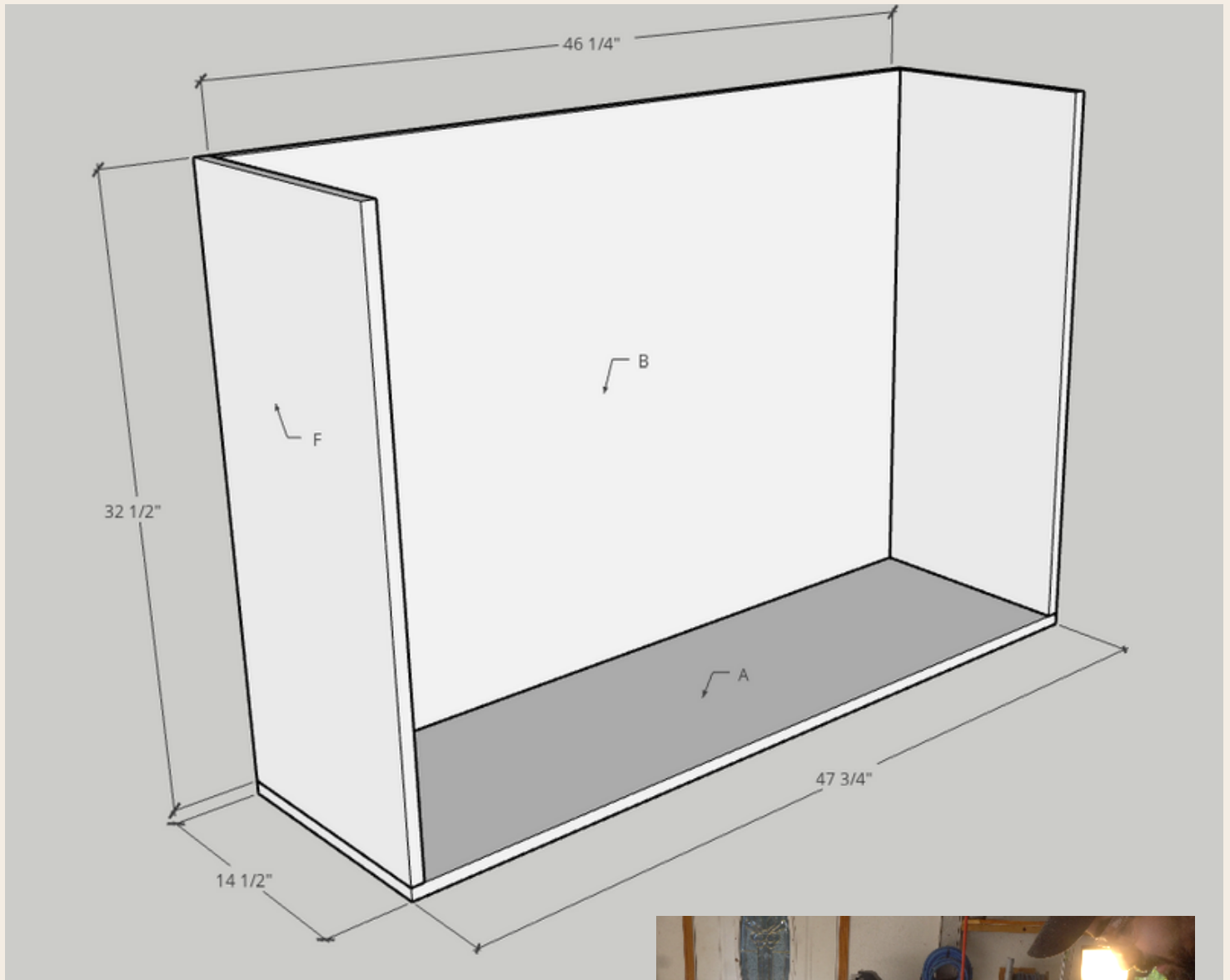


STEP 1: BUILD THE FACE FRAME



The face frame is built with poplar cut to size. Our cabinet will be painted so poplar is a fair choice. If you plan to instead stain your cabinet, consider using a harder wood.

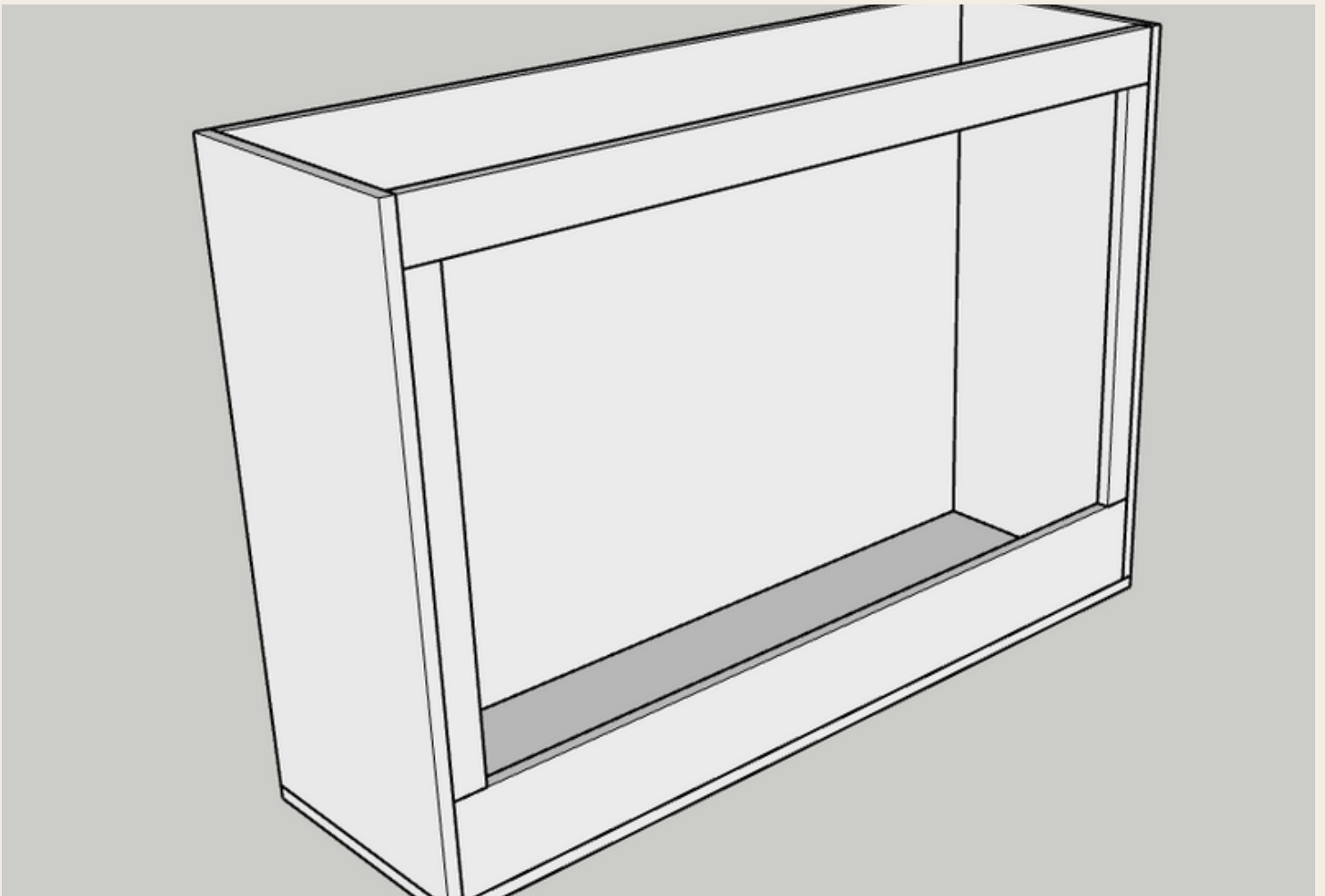
The frame rails and styles are joined with glue and pocket screws.



STEP 2:
BUILD THE CABINET BODY



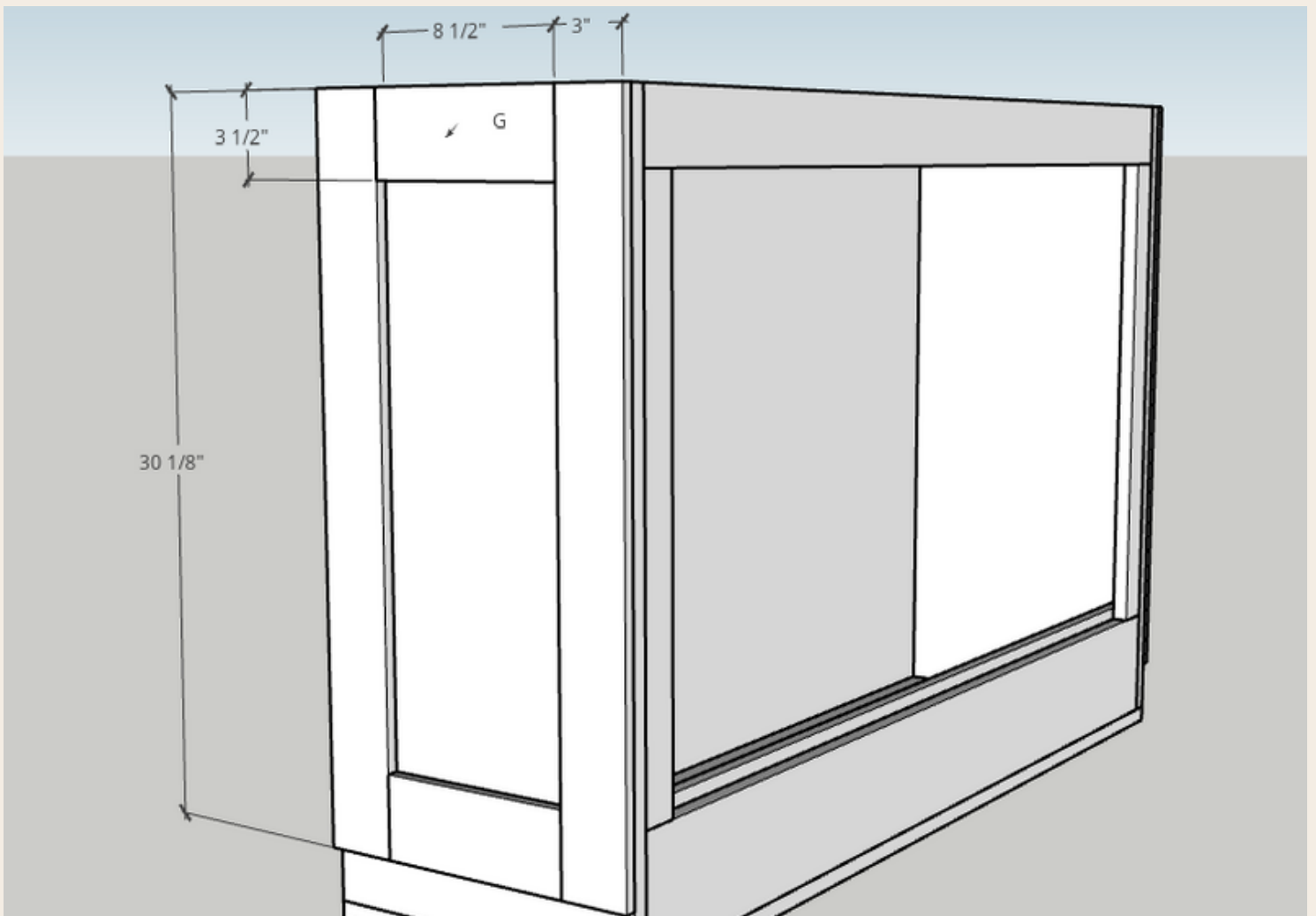
The body of the cabinet is built with 3/4" plywood cut to size and attached with glue and construction screws.



STEP 3:
ATTACH THE FACE FRAME
TO THE CABINET BODY

Attach the face frame to the inside of the cabinet body (front) using glue and construction screws. Consider using some nailing brads to temporarily hold it in place before you drill, glue and install construction screws.





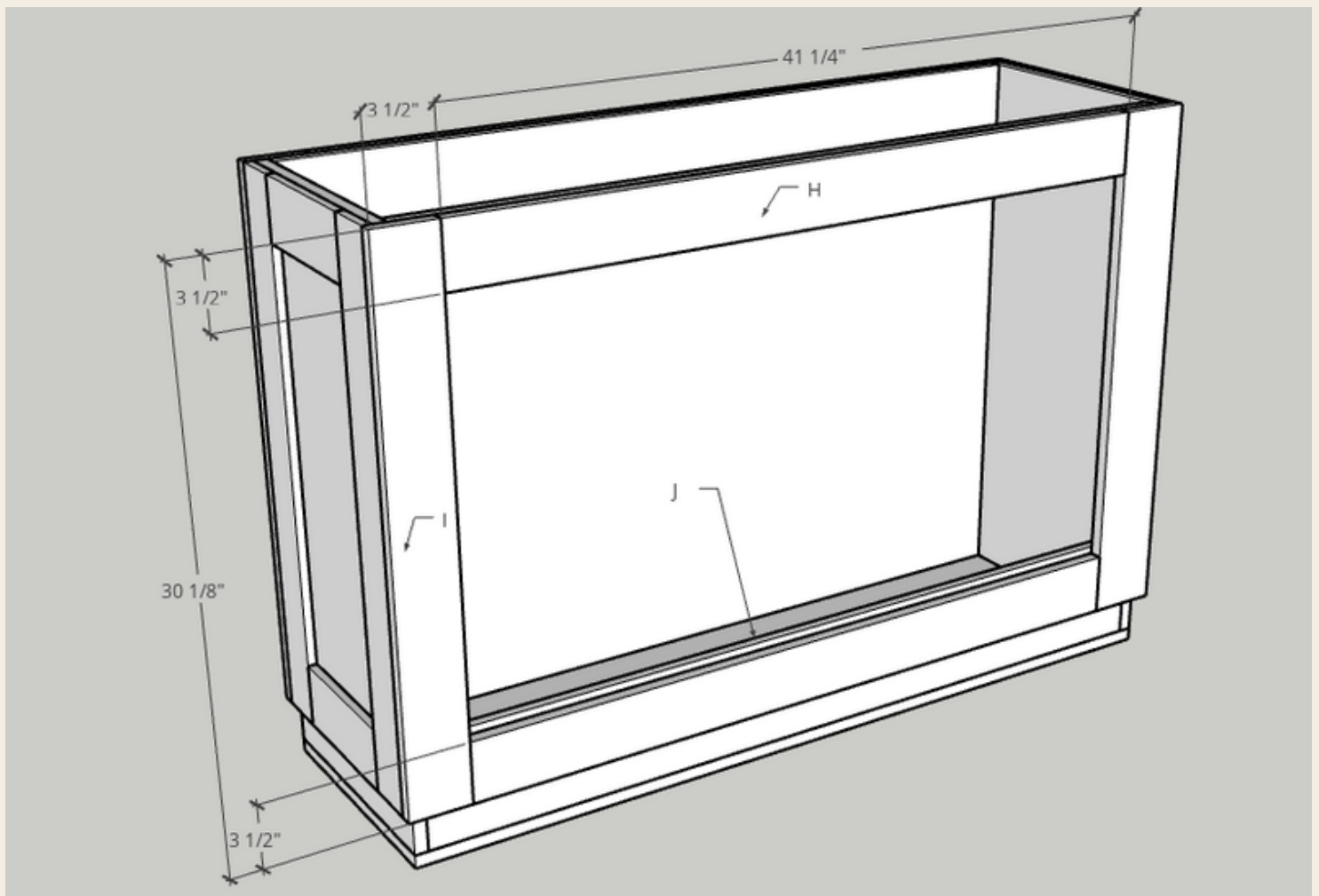
STEP 4:

ATTACH SIDE RAILS AND STYLES

Rip and cut the MDF down to size.

Note: The side styles are 3 inches wide. All other styles and rails are 3 1/2". The front and back styles will overlap the side styles by 1/2". Once painted, the side styles will appear to be 3 1/2" wide with this overlap. The styles are attached with glue and 1" brad nails.

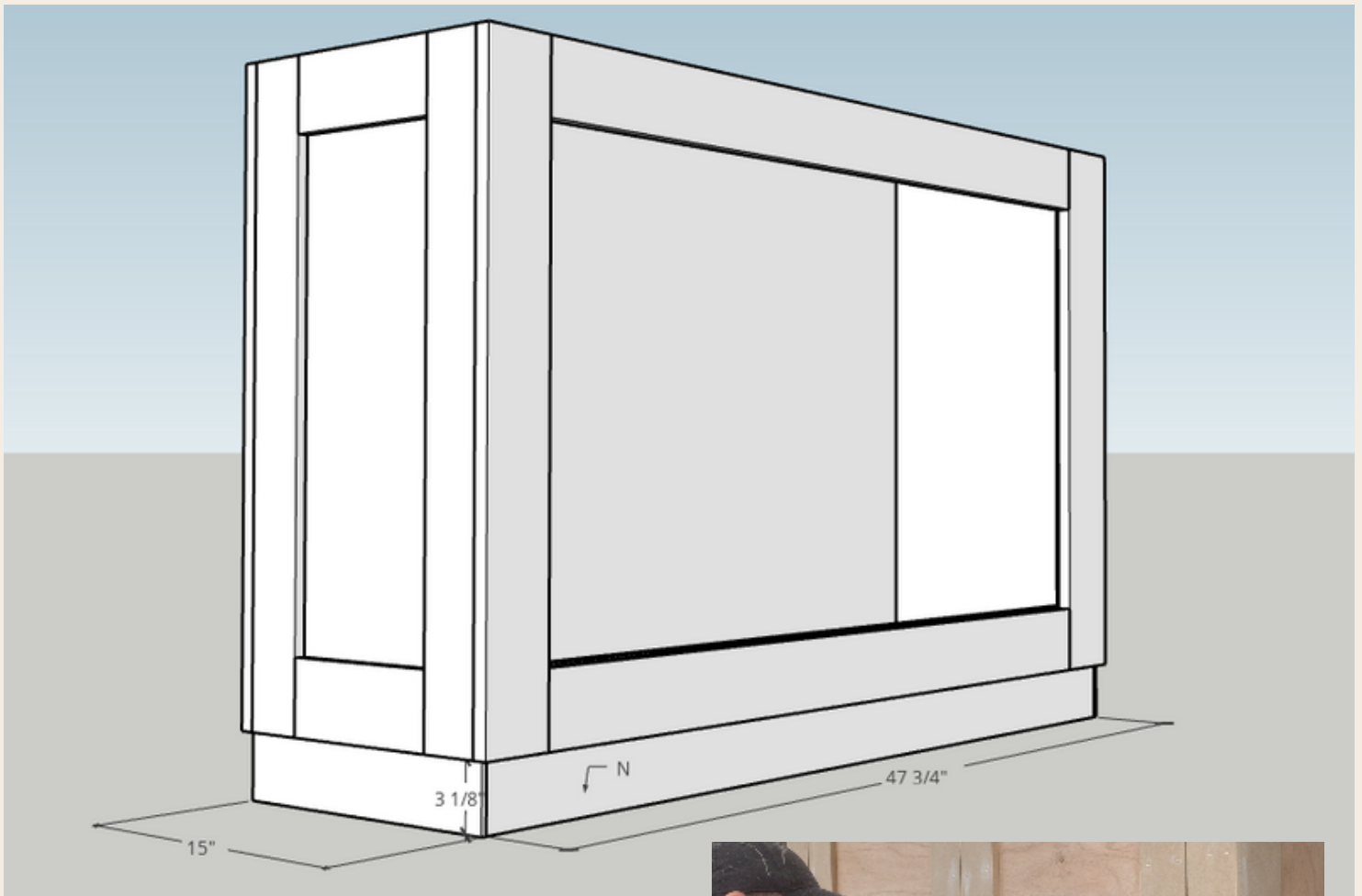




STEP 5:
ATTACH FRONT AND BACK
RAILS AND STYLES

Rip and cut the MDF down to size. Notice part J is an inside panel holder which needs to be attached to hold the front panel in place. The rails and styles are attached with glue and 1" brad nails.

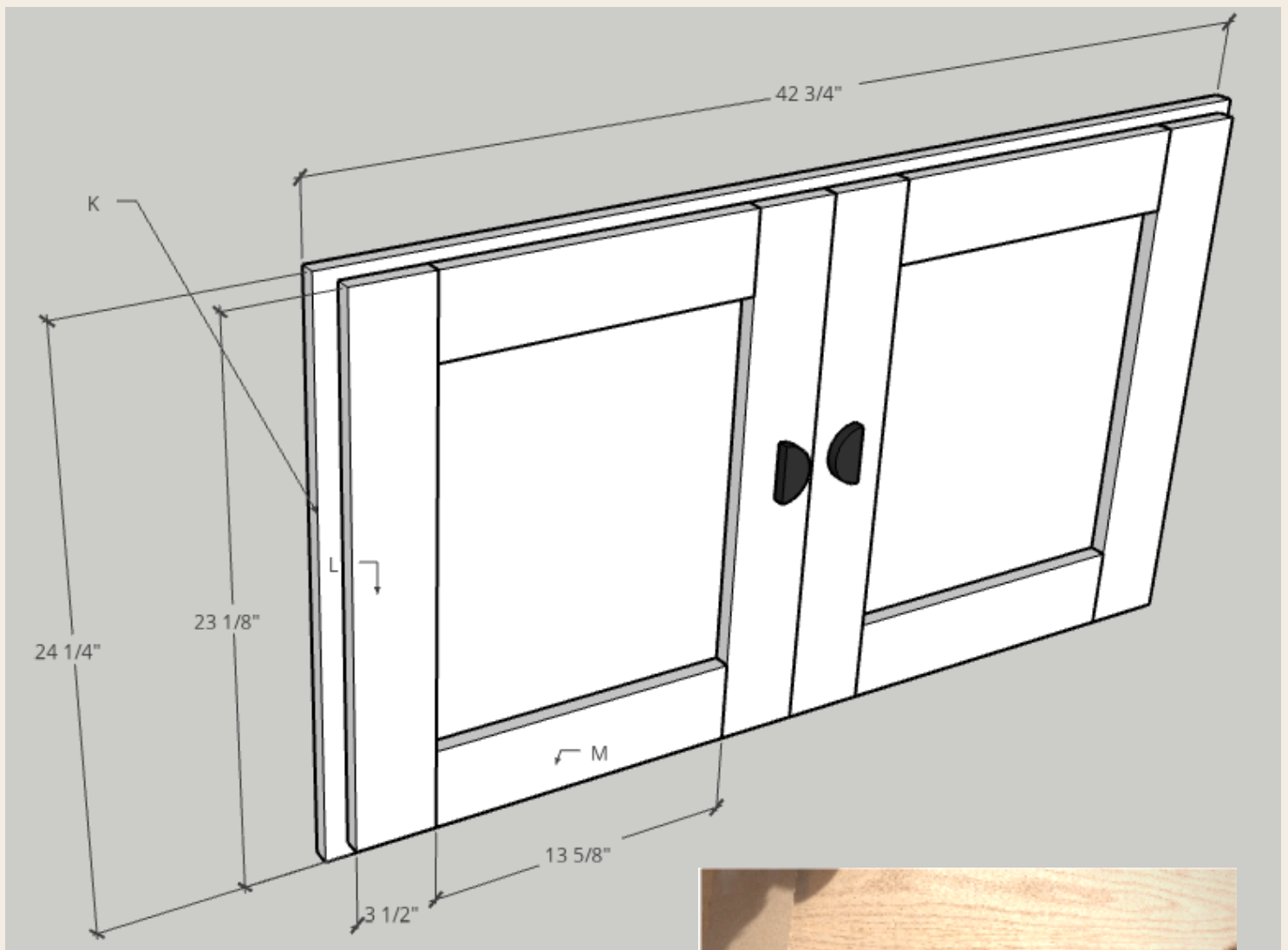




STEP 6: ATTACH BASE TRIM



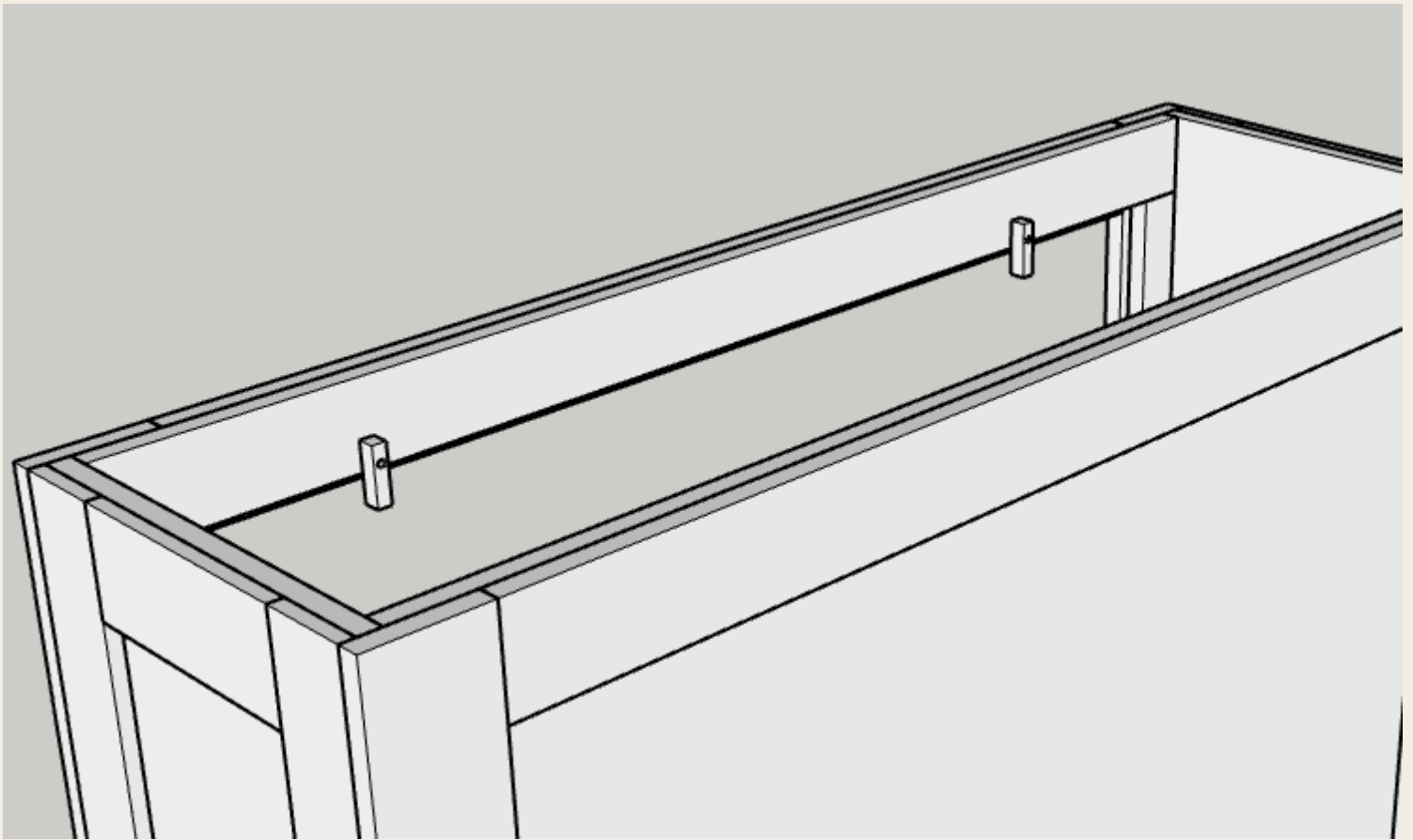
Rip and cut the 1/4" plywood to size for the base trim (N). Optionally you could use a decorative trim board or hardwood here depending on your design preference.



STEP 7: BUILD THE FRONT PANEL



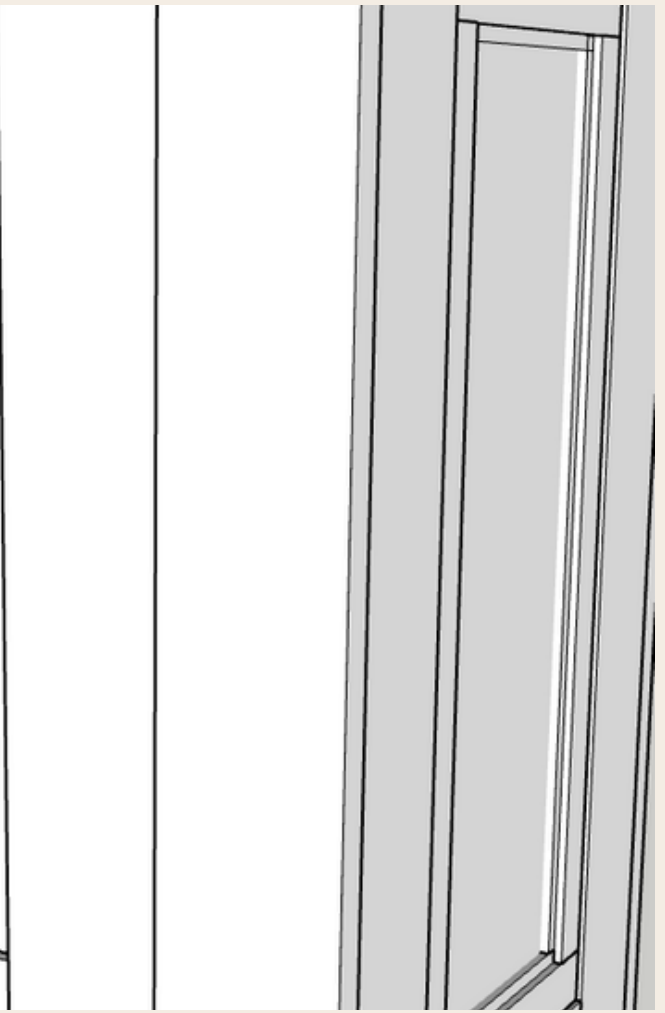
First cut the large insert part of the panel (K) and make sure it fits inside the front frame. Then use the edge of a metal square (or a 1/8" spacer) to mark a pencil line all the way around the opening. This will give you a gap and exact location to attach the faux doors with a nice reveal.



STEP 8:
PANEL HOLDER GRABS

Cut two small pieces of wood and drill oversized screw holes in each. These will rotate around and allow the front panel to be secured into place.

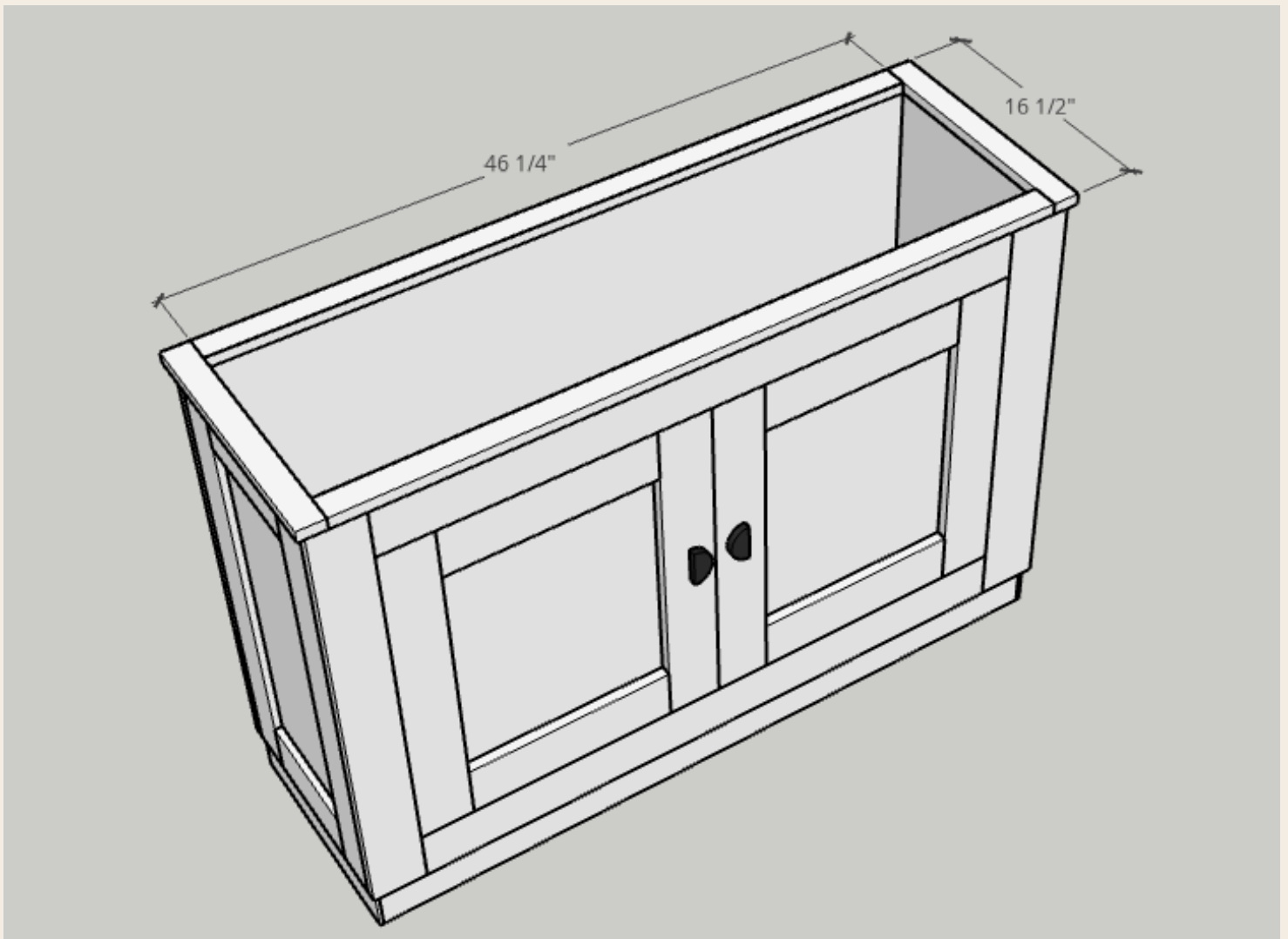




STEP 9:
ATTACH STOP TRIM
MOLD



Measure to fit and miter cut stop trim molding for the inside of each MDF style and rail. Optionally you could use 3/8" quarter round or another style 3/8" trim of your choice.



STEP 10:
ATTACH TOP TRIM
MOLD

Rip down the poplar to 1 3/4" and cut to size. Glue and attached with brad nails. We miter cut the corners.





STEP 11: INSTALL LIFT MECHANISM



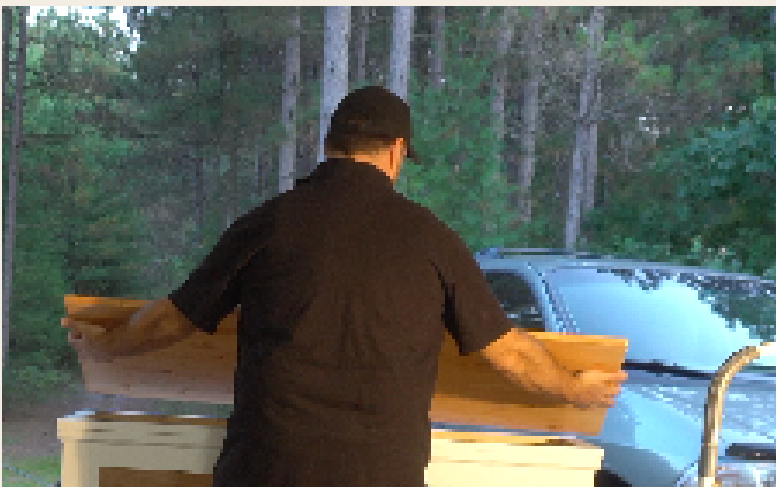
Reference the lift mechanism installation directions. In our case we simply mounted the lift mechanism bottom and top screws and ensured a 1/8" gap above the lift and lid.





STEP 12: ATTACH THE LID

We stained a large edge glued pine board for the lid but we'd suggest a harder wood or a laminated lid. The lid overhangs the front and sides but is flush with the rear cabinet wall where the hinge is installed.





STEP 13: OPTIONAL REVERSIBLE FACE PANEL & LEGS

Optionally you could create a secondary design on the inside of your face panel. Be sure to watch the full video at www.TVLiftCabinet.com/DIY to see how we built our reversible face panel.

We also optionally added 1.5" tall legs cut from 4x4 lumber. We cut a 1.5" hole for the cord with a hole saw.



TV LIFT CABINET



For a free build video of this project visit:
www.TVLiftCabinet.com/DIY

 **877-377-5435**

www.tvliftcabinet.com